

Atelier Jaspers is invited by Pierre Bonnefille to present the show #itinerance12 at Boulle Galerie in Paris during the Off Parcours of PAD Paris.

For this new exhibition "Conversation", the curator Jean-François Declercq is gathering a selection of art and design pieces from French and international creators of the contemporary art and design scene. Limited editions and unique pieces will be on display, along with Pierre Bonnefille's exceptional artworks and furniture. The purpose of the show is to conceive an inspirational and contemporary interior for architects and interior designers.

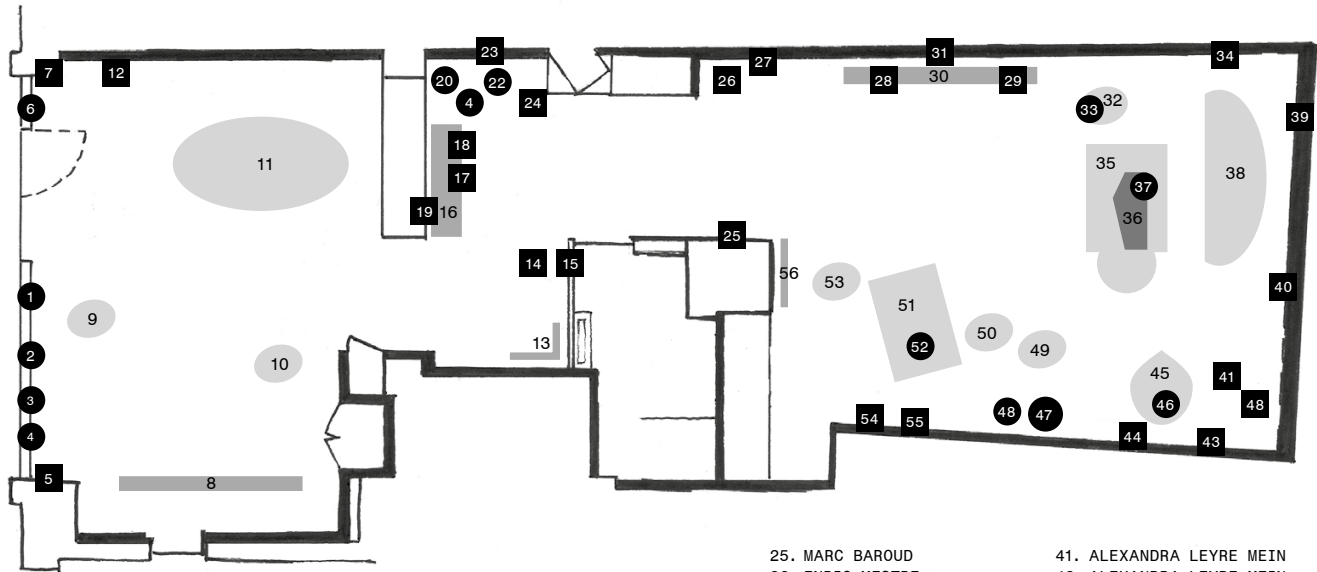
"Conversation" sets a singular dialogue between minimalistic artefacts and various materials. Photography, bronze paintings, contemporary tapestry, travertine console, marble table, brass chair, wooden folding screen, copper table, sculptures, ceramics, amongst others, enrich the interior of a seasoned collector with a hint of mysterious and enigmatic ambiance.

#itinerance12 will showcase the work of young talents and renown artists such as Alain Berteau & 6+2 Edition (BE) / Alexandra Leyre Mein (BE) / Alexandre Lowie (BE) / Andrea Branzi (IT) / Atelier Lavit (FR) / Clément Brazille (FR) / Aurore de la Morinerie (FR) / Destroyers/Builders (BE) / Emmanuelle Leblanc (FR)/Enric Mestre (ESP) / G BOU-GE (FR) / Maarten Stuer (BE) / Marc Baroud (LIB) / Marc Dibeh (LIB) / Nada Debs (LIB) / Nicolas Erauw (BE) / Pierre-Louis Graizon (FR) / Alexandre Lowie (BE) / Raphael Navot – Domeau & Pérès (FR) / Raw Materials (IND) / Sébastien Caporusso (BE) / Stan Van Steendam (BE) / Studio KRJST (BE) / Valentin Loellmann (DE) / Vincent Dulom (FR) / Vincent Fournier (FR) / Yann Dessauvages (BE)

The opening is on the 4th of April, from 4 pm to 9 pm. The exhibition will run from the 5th of April to the 6th of May 2019 at Galerie Boulle, Paris.



Conversation Pierre Bonnefille



1. 6+2 EDITION
& ALAIN BERTEAU
2. ANDREA BRANZI
3. RAW MATERIALS
4. RAW MATERIALS
5. EMMANUELLE LEBLANC
6. MARC BAROUD
7. EMMANUELLE LEBLANC
8. STUDIO KRJST
9. YANN DESSAUVAGES
10. MAARTEN STUER
11. MAARTEN STUER
12. VINCENT DULOM

13. BOU_GE
14. MARC BAROUD
& MARC DIBEH
15. PIERRE BONNEFILLE
16. CLEMENT BRAZILLE
17. CLEMENT BRAZILLE
18. PIERRE-LOUIS GRAIZON
19. VINCENT DULOM
20. CLEMENT BRAZILLE
21. CLEMENT BRAZILLE
22. CLEMENT BRAZILLE
23. PIERRE BONNEFILLE
24. NICOLAS ERAUW

25. MARC BAROUD
26. ENRIC MESTRE
27. EMMANUELLE LEBLANC
28. ALBAN LE HENRY
29. RAW MATERIALS
30. PIERRE BONNEFILLE
31. VINCENT FOURNIER
32. ATELIER LAVIT
33. MARC BAROUD
34. AURE DE LA MORINERIE
35. NADA DEBS
36. PIERRE BONNEFILLE
37. ANDREA BRANZI
38. RAPHAEL NAVOT
39. PIERRE BONNEFILLE
40. STAN VAN STEENDAM

41. ALEXANDRA LEYRE MEIN
42. ALEXANDRA LEYRE MEIN
43. PIERRE BONNEFILLE
44. PIERRE BONNEFILLE
45. SEBASTIEN CAPOROUSO
46. CLEMENT BRAZILLE
47. DESTROYERS BUILDERS
48. CLEMENT BRAZILLE
49. SEBASTIEN CAPOROUSO
50. VALENTIN LOELLMANN
51. BEN STORMS
52. CLEMENT BRAZILLE
53. VALENTIN LOELLMANN
54. AURE DE LA MORINERIE
55. AURE DE LA MORINERIE
56. ALEXANDRE LOWIE

Conversation
Pierre Bonnefille

GALERIE BOULLE
4 RUE BOULLE 75011 PARIS
05.04–06.05.2019

6+2 EDITION & ALAIN BERTEAU (BE)	10
MARC BAROUD (LIB)	14
PIERRE BONNEFILLE (FR)	18
BOU-GE (FR)	22
ANDREA BRANZI (IT)	26
CLEMENT BRAZILLE (FR)	30
SÉBASTIEN CAPORUSSO (BE)	34
NADA DEBS (LIB)	38
AUORE DE LA MORINERIE (FR)	42
YANN DESSAUVAGES (BE)	46
DESTROYERS/BUILDERS (BE)	50
VINCENT DULOM (FR)	54
MARC DIBEH (LIB)	58
NICOLAS ERAUW (BE)	62
VINCENT FOURNIER (FR)	66
PIERRE-LOUIS GRAIZON (FR)	70
KRJST STUDIO (BE)	74
ATELIER LAVIT (FR)	78
EMMANUELLE LEBLANC (FR)	82
ALBAN LE HENRY	86
ALEXANDRA LEYRE MEIN (BE)	90
VALENTIN LOELLMANN (DE)	94
ALEXANDRE LOWIE (BE)	98
ENRIC MESTRE (ESP)	102
RAPHAEL NAVOT – DOMEAU & PÉRÈS (FR)	106
RAW MATERIALS (IND)	110
MAARTEN STUER (BE)	114
STAN VAN STEENDAM (BE)	118
CONTACT	123

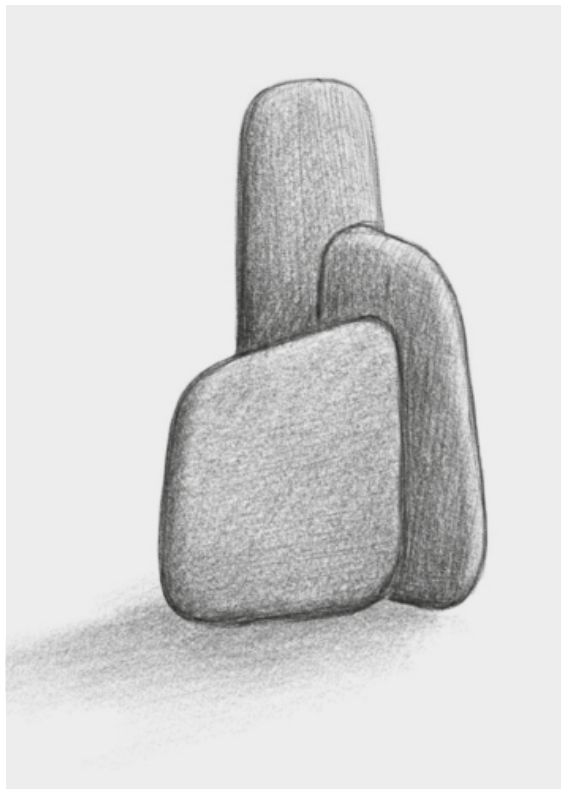


Established in Brussels since 2002, architect designer Alain Berteau and his team develops products, buildings and creative strategies. Designing stationary, textiles, tableware, glassware, lighting, indoor and outdoor furniture collections for both residential and contract markets.

Alain is the happy creator of several successful product collections. He's working with Bulo, Montis, Gispén, Lensvelt, Delvaux, Smart-Daimler, Wildspirit, Magazin, Objekten Systems, Othr, TossB, Modular, XLBoom and many other leading brands.

Always looking for lasting relevance, his designs are recognized for their simple but decisive functional innovation, smart eco-friendly solutions and versatile convenience.

Part of several design museum collections and winner of various awards such as Red Dots, IF or "Designer of the Year nomination", Alain is also a furniture design professor (La Cambre 2003-2013) and now CAD since 2014.



REMPARTS – 2018

Three gently rounded and polished stones cut out of a single marble slab, 45 x 30 x 25 cm
Manufactured by Van den Weghe.



For this first design edition, Brussels-based gallery Atelier Jaspers unveils exceptional pieces from architect-designer Alain Berteau, an influential figure of European design, well-known for its seminal inventions in the furniture industry.



Marc Baroud is a multidisciplinary designer, with work spanning over various fields. His enthusiasm for new ventures led him to experiment his approach in projects that are seemingly unrelated to design. In his method, the process is designed first, thus turning into a stand-alone outcome, taking a form of its own.

Based between Paris and Beirut, he works on bridging his two cities and cultures, as well as across several applications of Design. His projects include commercial architecture, scenography, interior design, furniture, services and brand development. As a product designer, he works on a large scope of industrial, artisanal and experimental projects, working with start-ups as well as big corporations.

Away from the form follows function paradigm, he designs objects with a method he calls materisation, which he defines as the transition from the state of idea to the state of object.



INTERSECTIONS – 2019
Shelf / Solid aluminium, hand hammered,
79 x 79 x 26,5 cm





Pierre Bonnefille is a French artist, painter, designer and “Maître d’Art” (Art Master) with a unique and poetic approach. Born in 1958 in Saint-Quentin in the North of France, he has lived and worked in Paris since 1985.

Material, colors and light are inseparable in Pierre Bonnefille’s work. The artist creates his own materials and textures, made from mineral powder, limestone, lava, marble, earth, from natural pigments and metallic powders.

Pierre Bonnefille is a veritable explorer, drawing his inspiration from the colors of nature with architectural references from Venice, Pompei and Kyoto.

To make his color palettes Pierre Bonnefille starts with the earth and the materials that he collects, and then goes on to analyze their colorimetric structures. The intensity, color and movements of light propose a ceaseless, new interpretation of color and texture created by Pierre Bonnefille, giving them a unique and particular identity.



ICE PAINTING N°9 – 2018
Original mixed media on metallix mesh,
130 x 160 cm



ENFILADE METAMORPHOSIS – 2016
Mixed media on wood, bronze burnished brass,
230 x 40 x 83 cm



Guillaume Bounoure was born in 1978 in Lyon. Chloé Genevaux was born in Strasbourg in 1984. They live and work together in the south of France since 2005. Before devoting themselves exclusively to art in 2018, they had various professional experiences as architects, designers, researchers, book authors...

They have been working on the fold thematic for about fifteen years. Bounoure & Genevaux decline the formalism of the fold through various media to reveal the universality of this language. Their current work theme is untitled "Fragments of Infinity". They use various as support materials such as composites, wood, aluminum, paper... At the first steps they make drawing and small models, sometimes also they work on computer to find form with algorithms that they develop to model complex folded shapes in 3d and 2d.

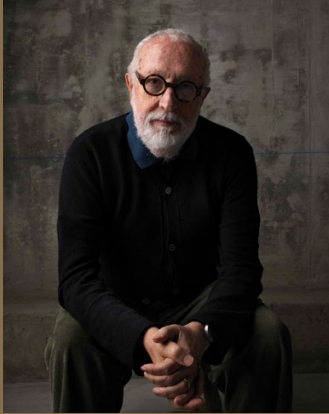
The techniques used by the two artists are: painting, sculpture, printing. The real or figured fold has become the plastic goal in itself that transcends technique, to invent new fictions.



CLEMENT CIVIDINO ENT.
DESIGN - ARCHITECTURE - ART - EQUATOR

POLYPTIQUE BOIS – 2017
 Charnière textile et bois engravé huilé,
 180 x 120 x 1 cm





Portrait: © Ruy Teixeira

Andrea Branzi is an Italian designer, architect, and artist. His work and interests are related to industrial design, architecture, urban planning, and cultural promotion.

Andrea Branzi was born in Florence in 1938 and studied as an architect at the Florence School of Architecture, receiving a degree in 1966. From 1964 to 1974, he was a founding member of the experimental group Archizoom, which envisioned the No-Stop-City among other projects. A key member of the Studio Alchimia, founded in 1976, he went on to associate with the Memphis Group in the 1980s. Since 1973, he has lived in Milan, where he currently works.

Papiers consists of a series of 10 objects, unique pieces, made of paper, which could remind to vases/containers, whose purpose however is just evoked.



It's Great Design





Portrait: © Flavien Prioreau

Clément Brazille is a French creator and designer based in Geneva. His work aims to explore the potential and limits of materials. He is especially focused on the methods of manufacture and the shaping of objects. Frequently, he is the craftsman of his own pieces and realizes an important part of his own production himself.

Clément Brazille keeps on collaborating with several cultural and industrial actors whose ambition is the development of high technology innovations or exceptional know-hows. If his production is especially focused on the craft of furniture coming from searches in different domains, Clément Brazille designs also public and private indoor spaces with strong personality. He advises and follows new innovative companies with an ethical and sustainable approach.



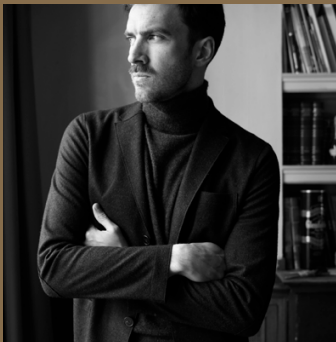
VACUUM CERAMIC
Stoneware, 38 cm x 27 cm x 27 cm,
limited edition of 50 copies



CONSOLE H75 – 2018
Ocean Travertine Stone
160 x 30 x 75 cm



SIDE TABLE H52 – 2018
Ocean Travertine Stone
25 x 25 x 32/45/52 cm



To penetrate into the imagination of the interior architect and designer Sébastien Caporusso is not a linear journey but a dreamlike interpretation of the materials. Tables, lamps, and other curiosities, which are on show, are his initial creations. Converted from stones, Murano glass, wood, marbles, brass and other collected minerals, all come from the finest Belgian craftsmen.

His talent is a mixture of simple and noble materials, which enables this unexpected scenography, and an eclectic mixture of objects and colors in his own universe.

The symbolic forms of his work are characterized by organic outlines as well as majestically and unusual cuts. Sébastien has a preference for rare objects, which are irregular and unique.

His work is complex. Different forms of expression can be found in his work. Interior designer, furniture design, scenography, decorative art and many others.



RIO
Stool, laquered steel, leather,
brass, 65 x 54 x 70 cm



PALAZZO PA04
Side Table, Marble Calacatta Viola,
56 x 110 x 95 cm



© Portrait: © Tarek Moukaddem.

Nada Debs is a Lebanese designer living and working in Beirut. Her work spans scale and discipline: from product and furniture design to one-off commissions across craft, art, fashion and interiors. What ties her work together is her ability to distil culture and craftsmanship to create pieces of emotional resonance. Nada grew up in Japan, studied design at the Rhode Island School of Design in the United States and has spent significant periods of time living and travelling the world, finding connections between different cultures. There is something of each of her experiences in all of her work. In essence, she captures the power of the human hand to tell stories that touch the heart. She calls her approach: handmade and heartmade.

AT THE EDGE OF LOVE — 2016
Wool, 300 x 160 cm



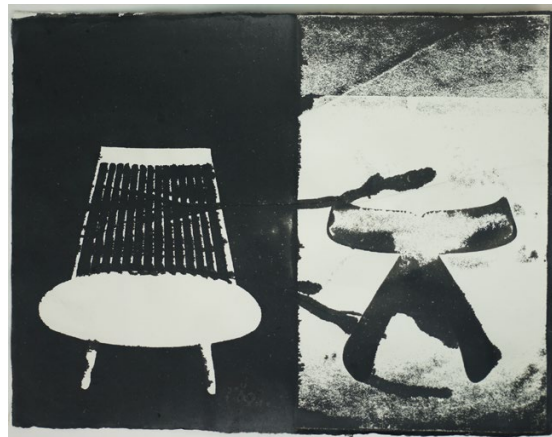
YOU TOO SQUARE – 2018
Wool, 300 x 200 cm



Aurore de La Morinerie is a French artist and illustrator. She first began taking calligraphy and Chinese painting classes while studying Fashion design at the Ecole supérieure des Arts appliqués Duperré, in Paris.

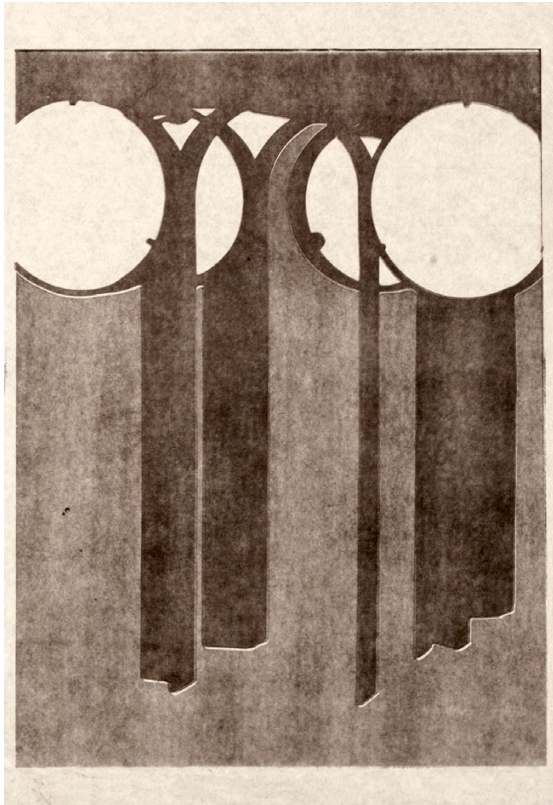
It was in the early nineties that Aurore first gained recognition as a Fashion illustrator. Today, she works with world-renowned brands like Hermès, Alaïa, Chanel, Cartier, Omega, Maison Martin Margiela, Rick Owens, H&M, Aesop, Lancel, Tiffany, Neiman Marcus and Le Printemps department stores. She is also a regular contributor to the New York Times T Magazine, the American and British issues of Harper's Bazaar, AD Magazine, ELLE France, as well as Le Monde's weekly supplement issue.

Represented by the Bartsch & Chariou gallery in Munich until 2018, she took part in Fashion illustrations exhibitions at the London Design Museum in 2010, and Hamburg Kunst und Gewerbe Museum in 2015.

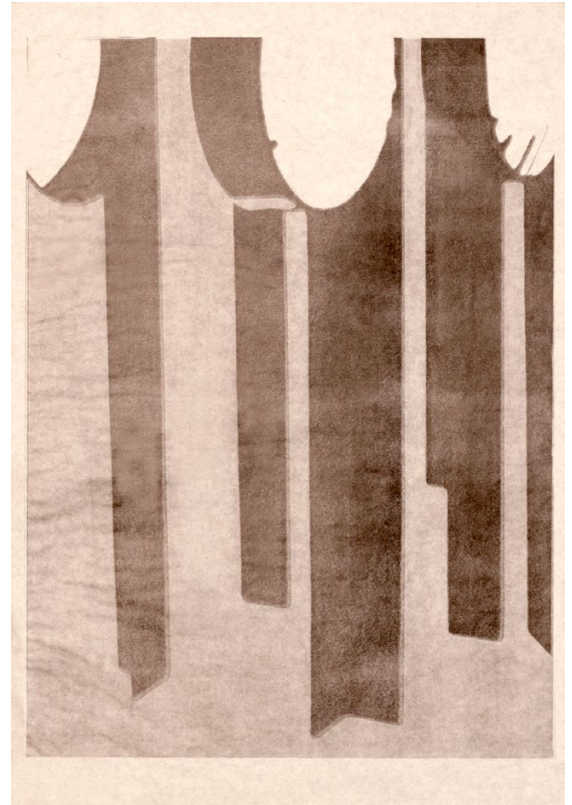


THE
 ART DESIGN LAB

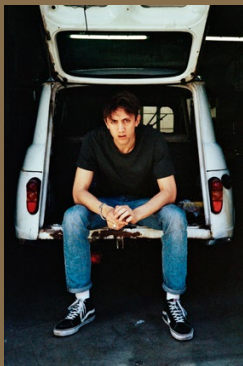
SANS TITRE – 2013
 Monotype sur papier, 86 x 70 cm



SANS TITRE – 2013
Monotype sur papier, 86 x 70 cm



SANS TITRE – 2013
Monotype sur papier, 86 x 70 cm



Yann Dessauvages °June 1989 born in Brussels is a Belgian autodidact artist-designer. As the child of a teacher and a metalworker, he grew up in a house with a workshop, where he created his first metal sculptures at the age of 16. He started his professional life working in a second-hand shop, where the sculptural furniture of designers like Armand Jonckers and Ado Chale struck him. Their capacity to transform brass, copper and semi-precious stones into glamorous, sophisticated objects inspired Yann to quit his job and elaborate his skills as a smith. After his first furniture experiments in recycled tin, he refined his style by using brass and gemstones.

Without any background in art or design, Yann Dessauvages creates his furniture by intuitively sculpting the materials available in his workshop. The references to organic, planetary or geological forms come from his unbiased imagination. More than a collection of tables, he creates a coherent oeuvre that mixes functionality and art, object and subject, tradition and innovation.

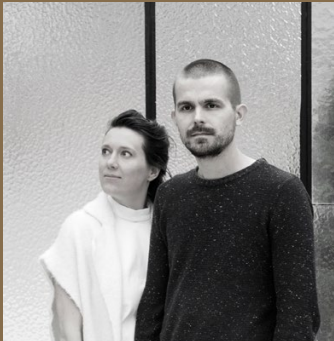


GOLDEN THRONE – 2018
Feuille de laiton soudée



GOLDEN THRONE



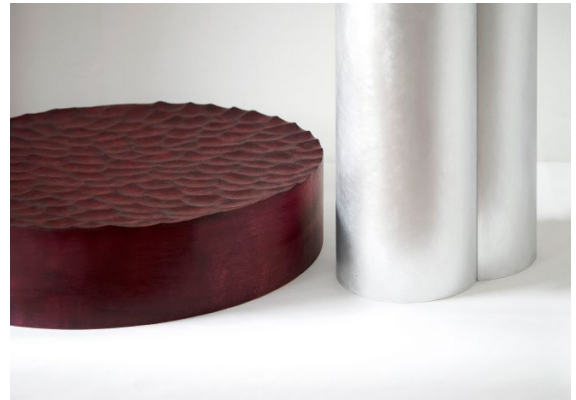


Portrait: © Linde Freya Tangelder

Destroyers/Builders is a Brussels based design studio, founded by Linde Freya. With a focus on materiality the studio strives for sensory relevance in detail and bigger scale. Linde Freya highlights the field between industrial and human methods, and translates this into primary form language.

Studio Destroyers/Builders makes objects and interior projects with a conscious material use and aims to bring daily objects closer to our senses. Our projects that range from commissions to self-initiated projects, and extends across the realms of both product and interior design.

Product and material designer Linde Freya Tangelder (1987), based in Brussels, has been raised with Brazilian-Dutch background. Her interest for materiality and wealth in cultural objects became alive at young age. After her work experiences at the Campana Brothers in Sao Paulo and Studio Unfold in Antwerp, she started Studio Destroyers/Builders together with her work/life partner Jo Groven.



BIGGER PLATE 01 – Limited edition of 10 pieces
Meranti wood “aubergine”, pigment and varnish,
13 x 60 x 60 cm





Marc Baroud was Marc Dibeh's teacher, and after completing his Masters Degree, Dibeh worked for Baroud before opening his own studio following Baroud's advise. Beside becoming very close friends, they collaborate on several projects.

The philosophy of Marc Dibeh's studio, opened in Beirut in 2009, is mainly based on collaborations, which by definition implies working with other fellow designers or non-designers.

He exhibited in Milan, Miami, Basel, Dubai, Lausanne, and Beirut where he also teaches at Académie Libanaise des Beaux Arts.

Challenging minimal design on "Wires" project, the 2 designers used a simple steel thread, shaped into triangle, rectangle and diamond, and then split to create three dimensional shapes.

These obtained basic forms show infinite possibilities of sewing on a space, embracing full functions, occupying a floor, a ceiling a wall or corners.



WIRES – 2012

Oxidised Steel, Polished Aluminum, Oiled Walnut, 41,5 x 41,5 x 42,5 cm

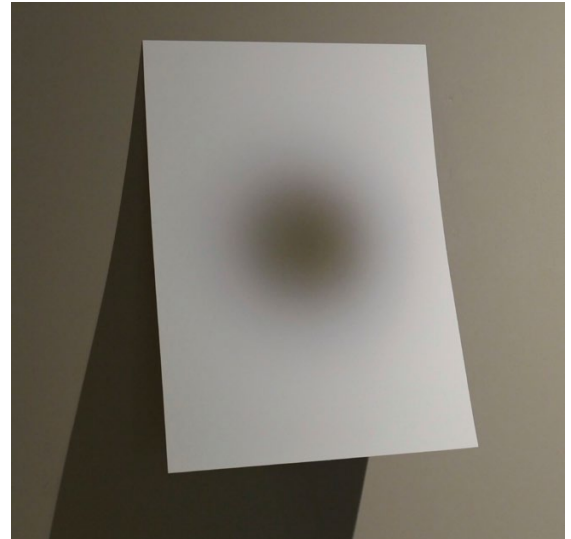


WIRES



Vincent Dulom's minimalistic and contemplative paintings raise under a moving shadow the perceptive possibility of their own disappearance. Their installation, which is based on an economy of means close to shortage/ scarcity, questions in situ, the sites which host them. It also reveals, by its discretion, a fundamental direction of Vincent Dulom's work: showing restraint -in confrontation and non-action -, which partly underlies it.

His works were presented in 2019 at L'ahah, Paris, in 2018 at the Chapelle de la trinité in Castanec-Bieuzy, Brittany, during the event L'art dans les chapelles and in 2017 at the art center BF15 in Lyon in parallel to the Lyon Biennale. In 2016, he exhibited at the Hôtel de l'industrie in Paris ; in 2010, at La fabrique in Toulouse and at L'espace de l'art concret in Mouans-Sartoux. On the same year as well as in 2013, he took part to the Nuit Blanche, Paris as an associate artist.



ADOSSÉE – 2019,
Inkjet pigment print, 29,7 x 42 cm
unique piece



Vincent Dulom, Percée,
Solo Show à L'ahah, 2019
© Marc Damage



Nicolas Erauw is a designer based in his hometown of Sint-Niklaas, Belgium. His first acquaintance with design was through his carpentry studies during high school. In 2017 he graduated from The Royal School of Arts in Ghent with a specialization in Furniture Design. Nicolas focuses on raw materials and old and industrial processes in which he leaves room for the unexpected.

WAX ON WAX OFF SERIES is a collection of the casted outcomes of the wax molds that I make with my self-made machine, TONK. I created TONK, a machine based on the old technique of candle dipping, to explore shapes and forms using a new medium. When combining TONK with the lost wax casting technique, I'm able to produce a unique piece every single time.



CHAIR T-006
Casted aluminum, 85 x 50 x 50 cm, 16 kg



CHAIR T-006



Vincent Fournier est un artiste français dont le travail explore les grands récits futuristes: les voyages dans l'espace, les architectures utopiques, l'intelligence artificielle, la transformation du vivant... Sa vision est nourrie de souvenirs d'enfance, dont les visites au Palais de la Découverte qui évoquent le "merveilleux scientifique".

Si la photographie reste son médium de prédilection, l'impression 3D, la vidéo ou les installations viennent parfois accompagner certains projets. Les images de Vincent Fournier sont mises en tension par des oppositions qui viennent troubler notre regard : réalité/fiction, logique/absurde, passé/futur, magie/science, naturel/artificiel... Il explore la fiction futuriste et découvre dans notre présent, ou dans le passé, des "éclats d'avenir".

Ses œuvres font parties des collections permanentes du Metropolitan Museum of Art (MET) à New York, du Centre Pompidou à Paris, la Fondation Mast à Bologne, la Collection Dragonfly du Domaine des Etangs à Massignac, la collection LVMH à Paris ou encore la collection Oscorp dans le film "The Amazing Spider-Man II".



CHAMBER OF DEPUTIES (ANNEX IX) #2, BRASÍLIA,
2012, 10 + 2 (9/10)





Pierre Graizon was born in Montpellier in 1992. He graduated with honours from ESBAMA in 2013, and obtained his master's degree at les Beaux Arts de Nantes with congratulations of the jury in 2015. He obtained his master's degree from the Accessories master at La Cambre in 2018 and is currently living and working in Bruxelles.

His work tends to question the role of distinction in the constitution of one's identity nowadays, the ambivalence of this quest for exception in a globalized society, as well as the consequences for a mediatically exposed and staged individual life.



SELFLESS #3 – 2019

Feutre de laine, arcanes majeures du tarot
de Marseille, 16 x 25 x 14 cm



SELFLESS #5 – 2019

Feutre de laine, peinture à l'huile,
élément végétal, peau de python, 18 x 25 x 30 cm



SELFLESS #4 – 2019

Feutre de laine, peinture à l'huile, arcanes
majeures du tarot de Marseille, peau de
python, 15 x 22 x 11 cm



Portrait: ©Alexander Popelier – Studio KRJST

KRJST Studio's story started in 2012 launched by Erika Schillebeeckx (KR) and Justine de Moriamé (JST), both graduated in Stylisme at La Cambre (Belgium) where they developed their knowledge for textiles, colors and shapes.

KRJST Studio became a world dedicated to plastic research and development based on a quest for spirituality. Through their creative process, they reinvent iconographies from the past, crystallizing their research on protection, symbolism and the Sacred.

Their strong identity, close to neo-baroque, incorporates pictural and technical exploration. Painting, drawings, 3D works and results of our alchemic experiments are filling the studio. The translation of the research into clothes and weaving represents the heart of their creative approach.

KRJST Studio takes its root in the unexpected symbiosis between fashion and art, mixing works in colors, 3D, technology, textile and craft.



AWE-UNDERWATER – 2018
Merino wool, Mohair, Polyamide, Elirex,
Polyester, Acrylic, Monofil, Coton
300 x 400 cm



DETAIL



AWE - UNDERWATER — 2018



Atelier LAVIT is an architectural and design practice based in Paris.

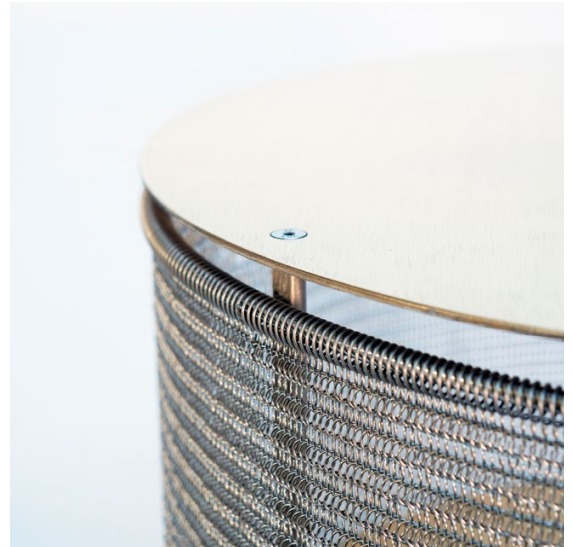
Marco Lavit studied architecture at Ecole Speciale d'Architecture in Paris and at Royal Melbourne Institute of Technology in Melbourne. He graduated at ESA in 2011 with a dissertation on wineries design. His sensibility towards design took shape at the studio of the architect and designer Riccardo Blumer. His time at LAN Architecture further strengthened his architectural direction, with a strong focus on design culture and attention for detail. Marco founded his architecture and design practice, Atelier LAVIT, in 2014 together with Carlo Lavit.

Since then, the practice has been active in France and Italy. Atelier LAVIT's work originates from the dialogue with artisans and their savoir-faire, especially Made in Italy. Architecture and design often proceed in parallel, striving to reach essential forms. This approach results in an extemporal production, which does not follow trends, but rather lets the strength of raw materials speak for the designs themselves.



It's Great Design

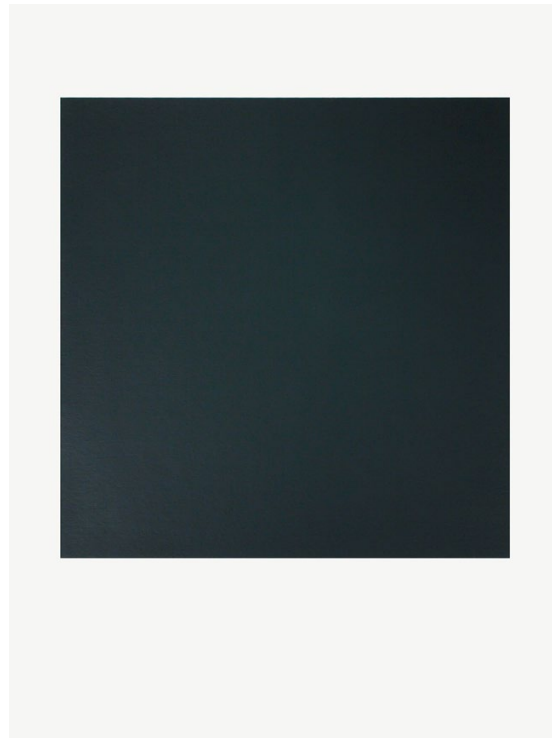
CABARET nightstand – 2019
 Stainless steel structure
 45 x 45 cm





Born in France in 1977 Emmanuelle Leblanc lives and works in Bordeaux. After getting her MFA from the Toulouse University, she obtained a postgraduate diploma in Design specialising in the study of colour.

Stemming from portrait tradition and photo-realism, Emmanuelle's work evolves toward abstract minimalism, which tends to perpetuate the Color Field Experience practices. Thus, through her small or large canvases and sometimes, sculptural installations, the significance of the "figurative" image tends to gradually disappear only to re-emerge accidentally. The delicate, profound and diffuse colour variations of her paintings, offer a form of atmospheric synthesis of space, of moments or images traversed by memory.



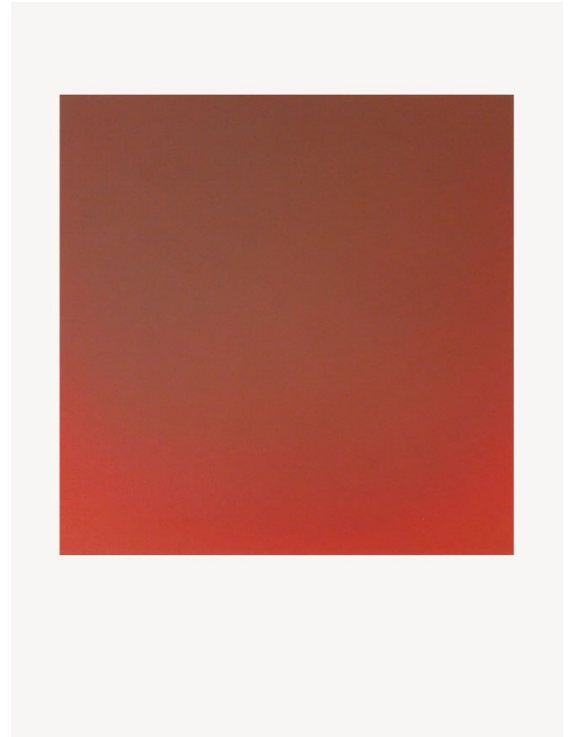
archi

 raar

DIFFUSE NOIR-EMPIRE – 2019
 Huile sur papier contrecollé, 40 x 30 cm



DIFFUSE GRIS-SÉPIA – 2019
Huile sur papier contrecollé, 40 x 30 cm



DIFFUSE VERT-CINABRE – 2019
Huile sur papier contrecollé, 40 x 30 cm



Alban Le Henry studied design at ENSCI (Ecole Nationale Supérieure de Création Industrielle)– Les Ateliers in Paris. After he graduated in 2001, for several years he assisted the Bouroullec brothers, whose studio he regards as his second school. He created his own practice in 2007, where he works on a wide range of projects.

The Carved Sunset lamp is an object with great evocative power. It reproduces the horizon line and the luminous effect of a crepuscular light.

The lamp is edited by It's Great Design



It's Great Design

CARVED SUNSET – 2013

Led table lamp, 26,5 x 40 x 13,5 cm



CARVED SUNSET



Alexandra Leyre Mein's artwork centers around the human body, sculpting's original subject. Her strong and yet vulnerable sculptures are imbued with her interpretation of the human mind and behavior. Beauty, violence, death, vulnerability, the subconscious and the uncanny are all present in her pieces. She translates these themes with force into sculptures that are both from today and yet seem to come from another age.

Alexandra's materials of choice are plaster and hydrostone, through which she creates strong anatomical hybrid figures who struggle between movement, stability, emotions and tensions. These sculptures with traces of their making are adjoined with polished pristine flat surfaces, rebar, rust, glass, and water pipes forming horse legs or tree trunks.

To minimize the intervention of her conscious mind she sculpts directly in plaster, shaping live-sized pieces without preliminary vision of the finalized work and by using a quasi-instantly setting material.



MASKED HEAD I – 2017

Hydrostone, mesh wire, cheesecloth, pigments, metal, and varnish, 55 x 24 x 29 cm



MASKED HEAD



Born in 1983 in Germany, Valentin Loellmann grew up in a family which encourages the creative expression and it is quite naturally that this abounding universe makes emerge its artistic potential. Sensitive and strong of a great curiosity, he observes with minuteness his environment and retranscribes his emotions through the pieces that he delivers. In 2010, graduated from the Academy of Fine Arts in Maastricht, he founded his studio, accompanied by Galerie Gosserez who immediately perceives the talent of his expressiveness.

Between design and sculpture, he makes from wood his favorite material and works it by hand, relentlessly, confronting its heat with copper, brass and steel for a surprising and original aesthetic encounter. Increasingly present on the current art scene, he regularly exhibits with the Galerie Gosserez at Art Basel, Collective New York, PAD Paris, PAD Geneva and PAD London, where he won in 2013 and in 2017 the awards of "The most Beautiful Contemporary Design piece "for the Spring-Summer console and the Copper corner bench. We can also observe an increasing number of publications, reports and documentaries devoted to its creation. All these elements testify of an important recognition by the professionals and the public.



galerie
Gosserez

FALL/WINTER – CHAIR
 Burned hazel branches and walnut,
 wengé or oak, 78 x 42 x 50 cm



SPRING/SUMMER – STOOL
Electroformed copper and burned oak,
45 x 30 x 38 cm, Each piece is handmade
by the artist, signed, dated and numbered



Alexandre Lowie (°Ghent, Belgium, 1988) chose to become a furniture designer after asking himself the question: What did I enjoy doing as a child? The answer – transforming knotty branches into walking sticks, making boxes, constructing things – guided him towards the right choice.

Alexandre surrounds himself with people who are active in and skilled at other disciplines: musicians, writers, actors, interior designers, architects – other perfectionist craftspeople, in other words. They help, support and inspire him. There is a reason why art deco, a highly architectural decorative art style, has a huge influence on his work. ‘Modern architecture inspires me with its proportions and line patterns; the way in which buildings catch the light, the shadow play this produces. I’ve always had an autistic streak in me: I’m forever measuring proportions in order to understand them. I started doing so as a child already.’ Instinct and gut feeling determine a piece of furniture’s proportions. Alexandre tends to rely on the golden section for that – although he equally often deviates from its principles.



FOLDING SCREEN – 2019
Lemonwood, white ebony, Ebony,
208 x 202 x 2 cm





Originally trained in painting, Enric Mestre studied at San Carlos Fine Arts School in Valencia. On the advice of a family friend he attended the ceramics school in Manises. During this time he met the ceramist Alfonso Blat, a crucial influence, for Blat was one of the seminal figures who, along with potters like Llorens Artigas and Francisco Ibáñez took Spain into the mainstream of modern ceramic art.

Mestre, both as a teacher and practitioner, has himself come to be regarded as an important liberating link between this formative generation and that of Spain's younger avant-garde.

Mestre is also a member of the International Academy of Ceramics (IAC), and for some years he was part of the IAC Council from which he organised the IAC 1986 Congress in Spain (Madrid-Valencia).

Mestre has been awarded in several international events and has received the Gold Medal of the Baviera State in Munich (1976) and the Bayerischer Staatspreis Lotte Reimers (2010), as well of some other prizes in Spain.



UNTITLED – 2016
Céramique, engobes et émaux, pièce unique,
23 x 31 x 23 cm





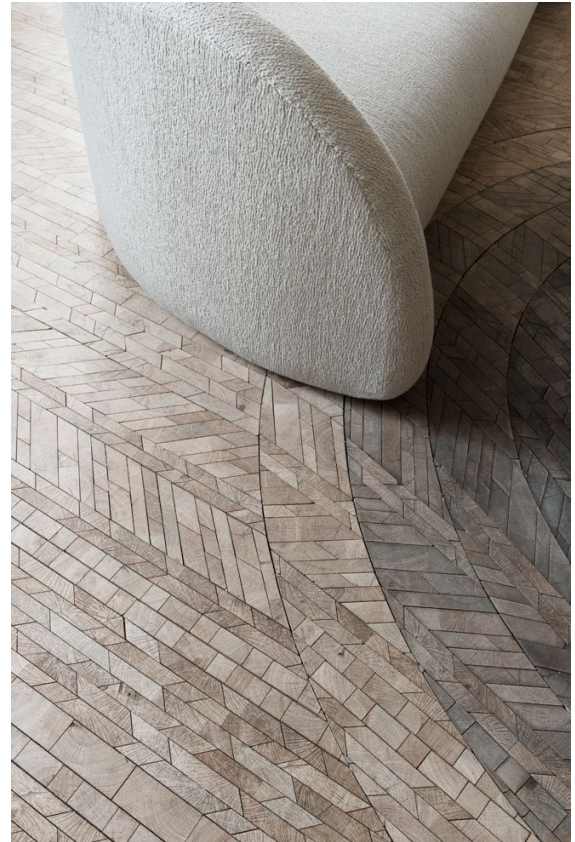
© Julia Bidermann

Raphael Navot was born in Jerusalem, graduated from “The Design Academy” in Eindhoven, Netherlands, and lives and works in Paris.

A multidisciplinary, non-industrial designer, he focuses on custom made design and made to measure interiors, combining traditional methods with contemporary “savoir-faire”.

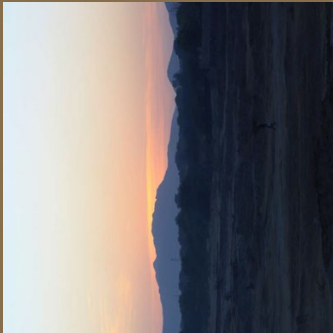
Raphael first made a name for himself designing the Silencio club in Paris in collaboration with David Lynch, he also did the Parisian flagship for the Japanese brand Pas de Calais.

He just completed the Hôtel National des Arts et Métiers, a 66 room hotel and restaurant in central Paris.



MOON – 2016 (DOMEAU ET PEREZ)
 Couverture tissu Pierre Frey, 300 x 78 x 120 cm





As splinters of cultural importance or wasteful debris created by man, fragments provide traces of their past and have helped create an understanding of the physical world. To us, each stone offcut is unique with its individual history and abstract notions of origin, identity and possibilities of rectification.

For Offcut 04 Vase we have referenced one of our favourite architectural spaces - the 'Jantar Mantar' astronomical observatory, in Jaipur. The sculptural architecture of Jantar Mantar (loosely translates as 'magic signs') is composed of odd forms that were used as astronomical instruments in the 18th century. Corbusier had described them as "useless architecture or useful sculpture" and we are inspired by the oddities of this juxtaposition.



Kolkhoze

FOXFIRE I
 Table Lamps Mist White Marble,
 21 x 28 x 28 cm



OFFCUT 04
Oxide pink marble, mist white marble
& marble dust, 52 x 30 x 15 cm,
limited edition of 12



Graduate of the Royal Academy of Fine Arts in Antwerp, where he specialized in graphic arts, drawing and lithography, Maarten Stuer moved to Barcelona in the 1990s, where he learned to work with clay. In 1995 he moved to the Gers, France, where he still lives.

A lover of nature and landscapes, he turned to clay to develop his art. In his hands, the clay is not so dense, not so heavy, not so lifeless...

It becomes aerated and pierced, coils up and takes air, space, life and movement, apparently sensitive to weather conditions, to time passing and to the looks that it receives.

Through his different series his works increase in scale. However, the shapes that emerge from a made-to-measure kiln remain inspired by the natural world, seeds, shells, waves, coiled fibres: a powerful, subtle world that combines archaism and spirituality.

In collaboration
 with Aurélien Gendras,
 Kolkhoze.fr



AURÉLIEN GENDRAS

MS 12 – 2016

Kaolin engobe. Artist monogram at the base. 2016. Unique piece. This piece in two parts can be put indoor or outdoor.

H : 140 x 140 x 130 / 86 kg

H : 110 x 110 x 90 / 45 kg





The artistic practice of Stan Van Steendam translates itself as a deconstruction of the materiality of painting, which comes to expression in his intuitive compositions.

Through an extensive layering of raw pigment and plaster, the artist amplifies the spatial properties of painting – abandoning the traditional focus on surface – to increase the object's volume, making it enter the space of the viewer. This results in a body of work that blurs painting and sculpture, with an emphasis on the physical presence of the object in the space, making it approachable from all sides.

His use of texture, tactility and solid monochromes is aimed at triggering a mesmerizing effect with the observer: one of heightened perception, of inner absorption and being one with the material itself. Van Steendam questions the limits of painting by diverging from the medium's conventional application and proposing new approaches with minimal aesthetics. He treats the material sculpturally, laying bare the creational process in his work so that the object in his current appearance co-exists simultaneously with its history.



archi

 raar

DRIFT, 2018
 Matt polish varnish, pigments,
 plaster on board, 39 x 35 x 3.5 cm
 Unique piece



DRIFT, 2018



Over twenty years ago, a passion for design filled the world of Jean-François Declercq.

In September 2015, he decided to transform his home into a centre for the arts dedicated to cultural exchanges and exhibitions. The 400 m² Atelier Jespers renews this mission: showing art.

The modernist setting of the building hosts artistic projects of all varieties – design, visual arts, sound – with the humble ambition of creating a dialogue between Victor Bourgeois’s architecture and new art forms.

Allowing himself complete freedom, Jean-François Declercq opens his doors to various forms of expression, provided they are in line with his own minimalist and conceptual choices: “I like things simple and beautiful!”.



ATELIER

JESPERS

CONTACT

Erfprinslaan 149, Avenue du Prince Héritier
Brussel 1200 Bruxelles, Belgium
Jean-Francois Declercq +32 475 64 95 81
Elsa Sarfati +33 6 10 84 27 48
jf@itinerance-project.com

www.itinerance-project.com



@itinerance_project
@jeanfrancoisd

With the support of:



AURÉLIEN GENDRAS

galerie
Garrerez

SPAZIO
NOBILE

It's Great Design

THE
ART DESIGN LAB

Kolkhoze



